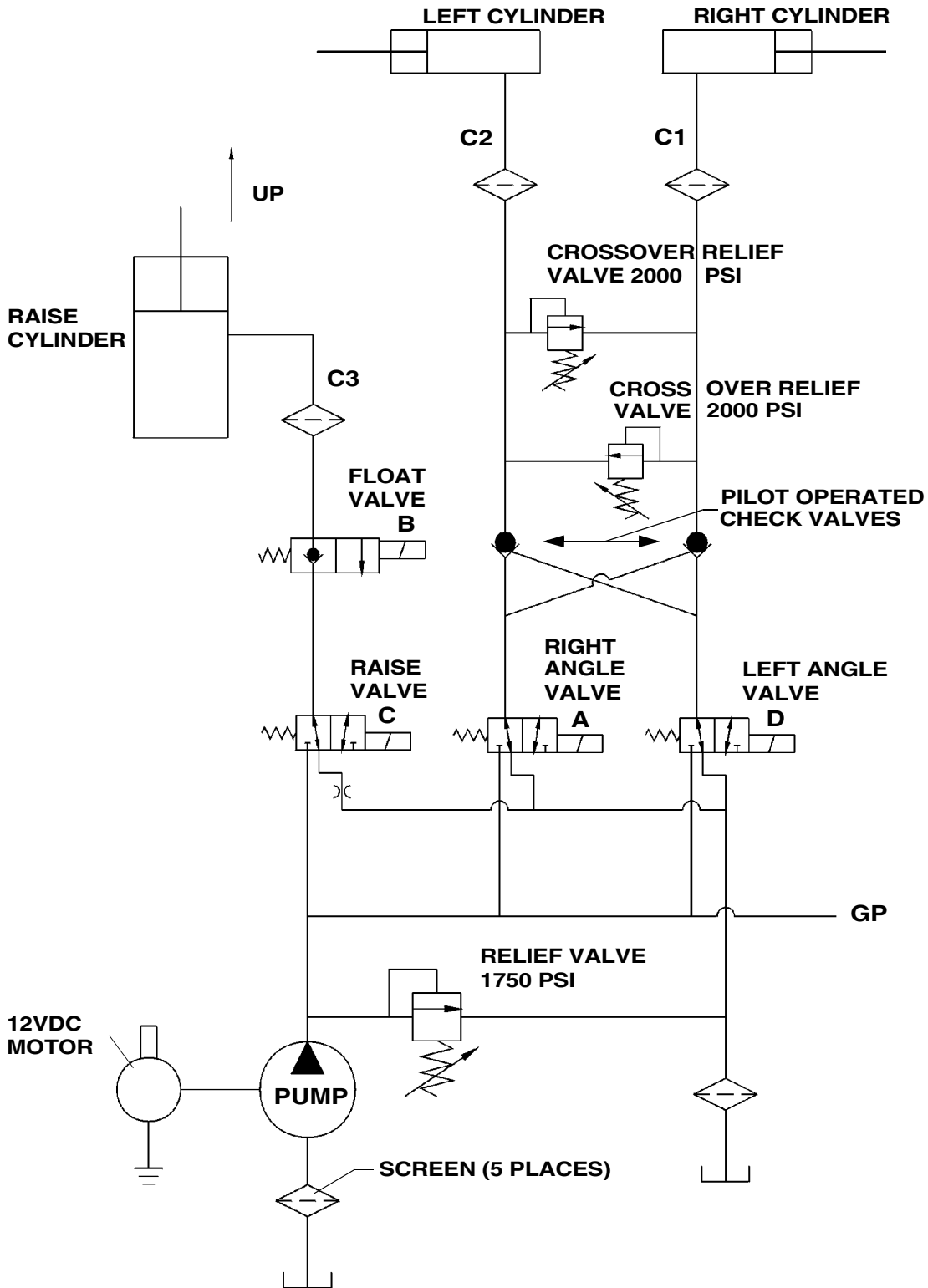
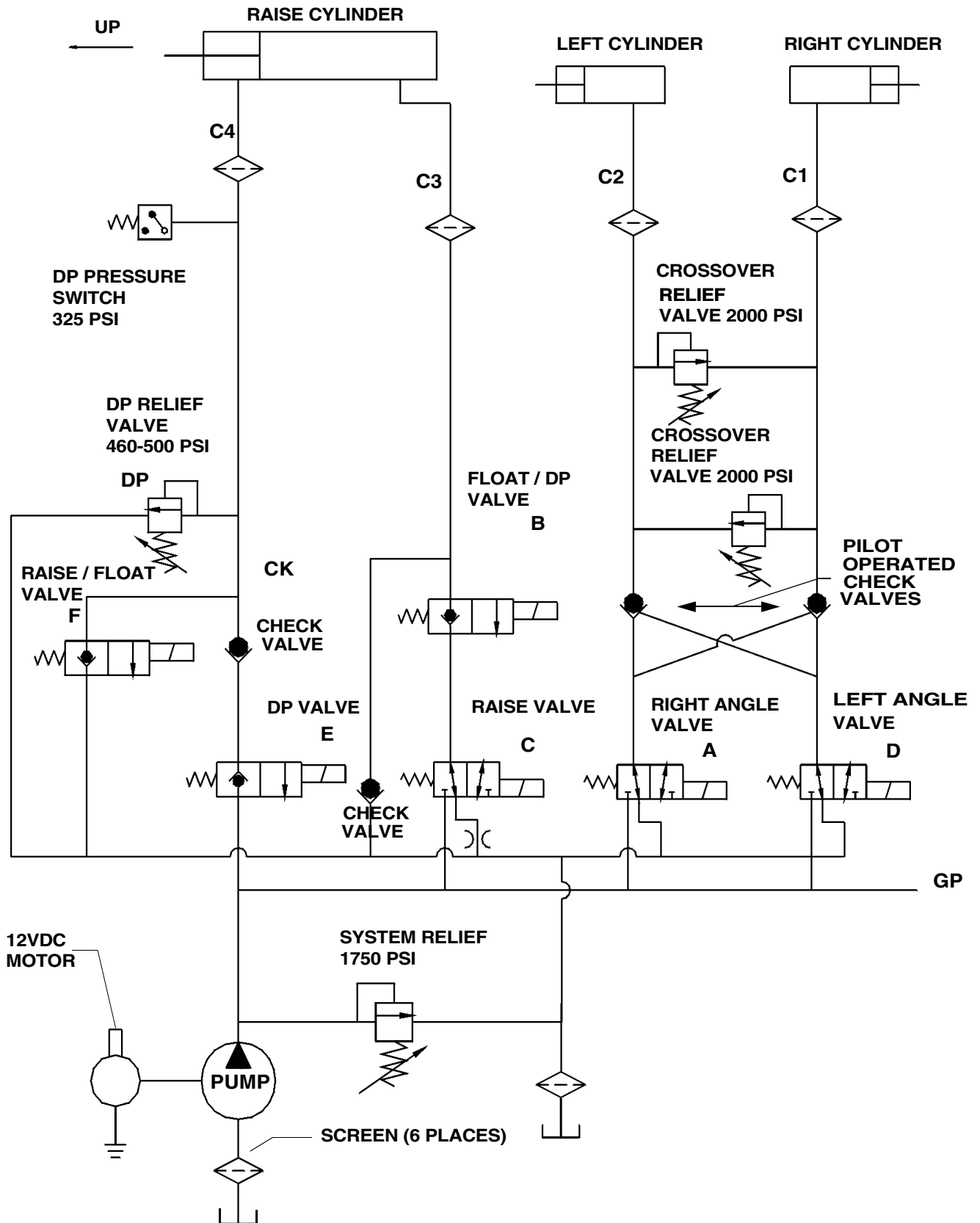


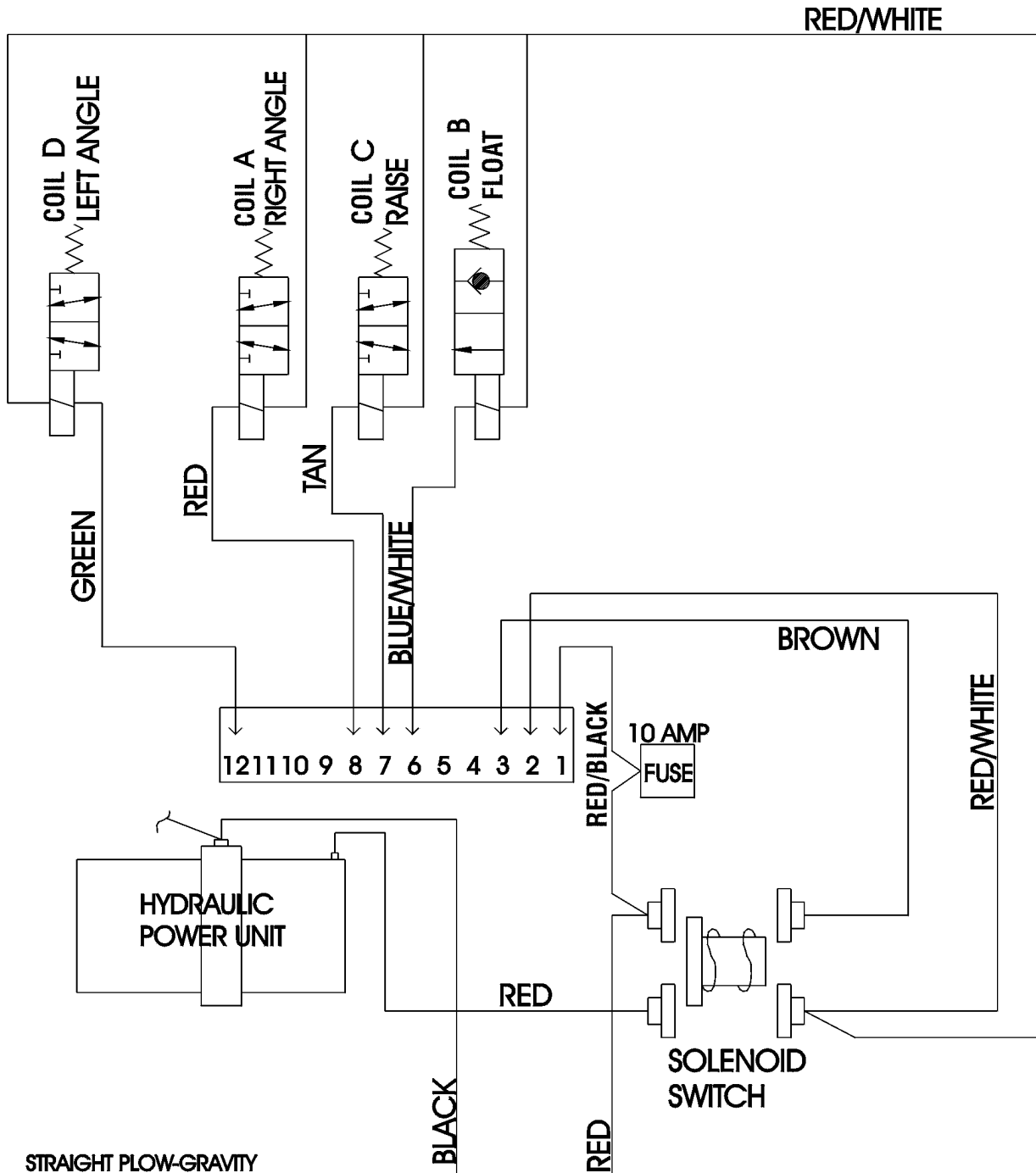
HYDRAULIC SCHEMATIC (Gravity Down System)



HYDRAULIC SCHEMATIC (Down Pressure System)



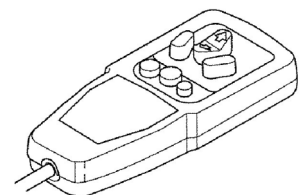
WIRING SCHEMATIC (Gravity Down System) With S.N. Before: 22G100200



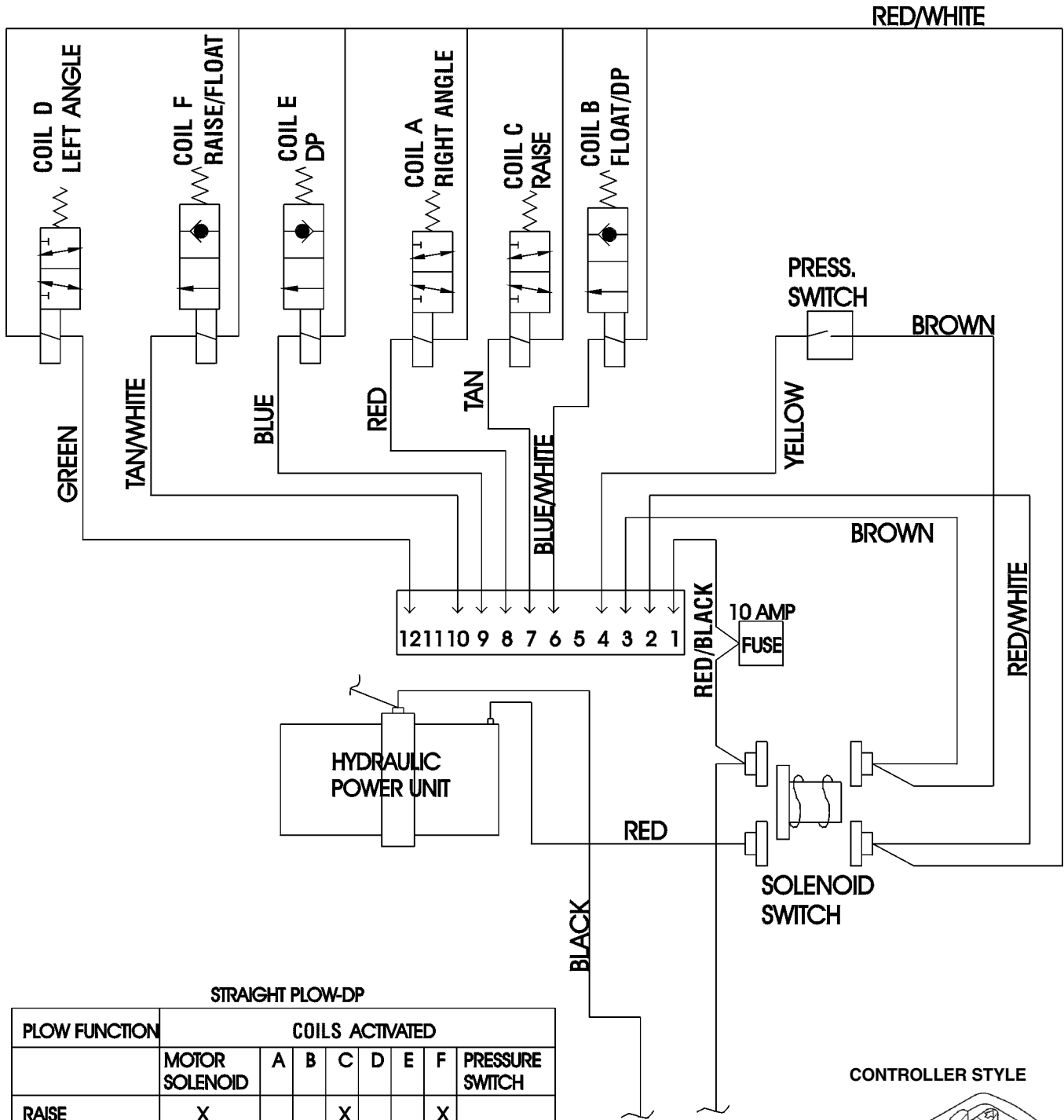
STRAIGHT FLOW-GRAVITY

FLOW FUNCTION	COILS ACTIVATED				
	MOTOR SOLENOID	A	B	C	D
RAISE	X			X	
DOWN (FLOAT)			X		
ANGLE LEFT	X				X
ANGLE RIGHT	X	X			

CONTROLLER STYLE



WIRING SCHEMATIC (Down Pressure System) With S.N. Before: 22D102000

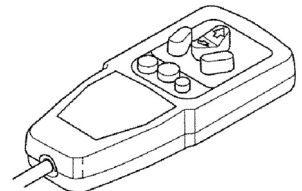


STRAIGHT FLOW-DP

FLOW FUNCTION	COILS ACTIVATED						PRESSURE SWITCH
	MOTOR SOLENOID	A	B	C	D	E	
RAISE	X			X			X
DOWN (FLOAT)			X				X
DOWN PRESSURE	X		X			X	X
ANGLE LEFT	X				X		
ANGLE RIGHT	X	X					

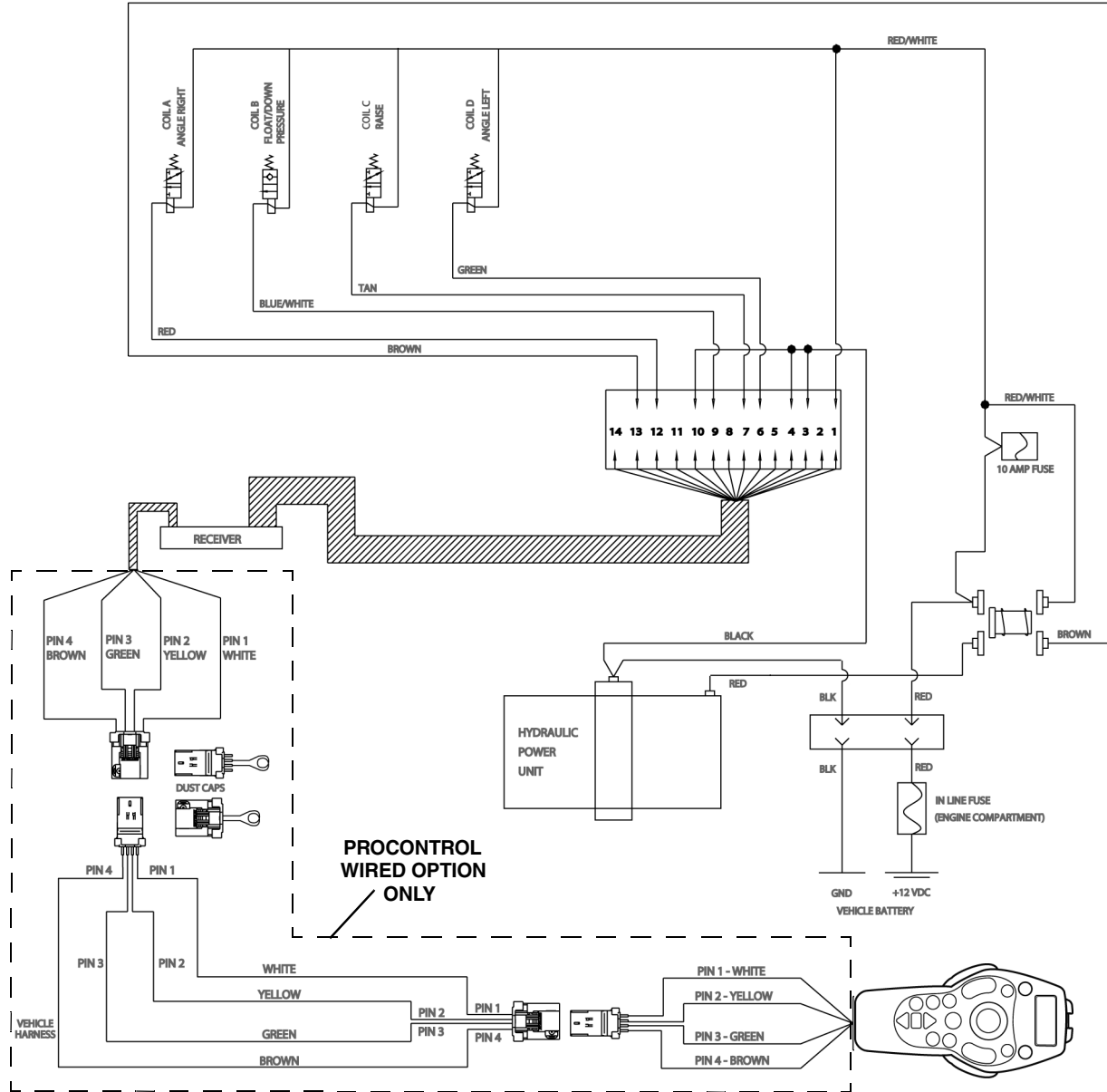
NOTE: COIL E MUST BE DEACTIVATED FOR ANGLE FUNCTIONS

CONTROLLER STYLE

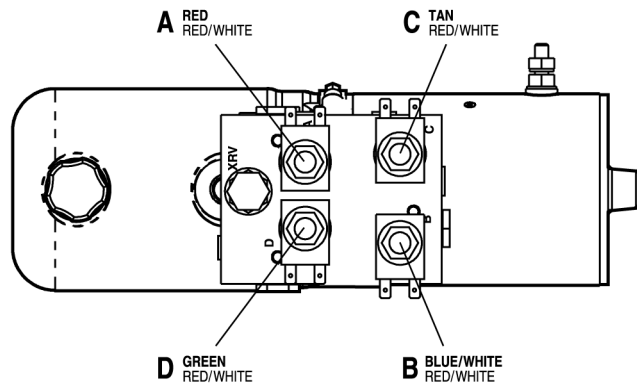




WIRING SCHEMATIC (Gravity Down System) With S.N. After 22G200000

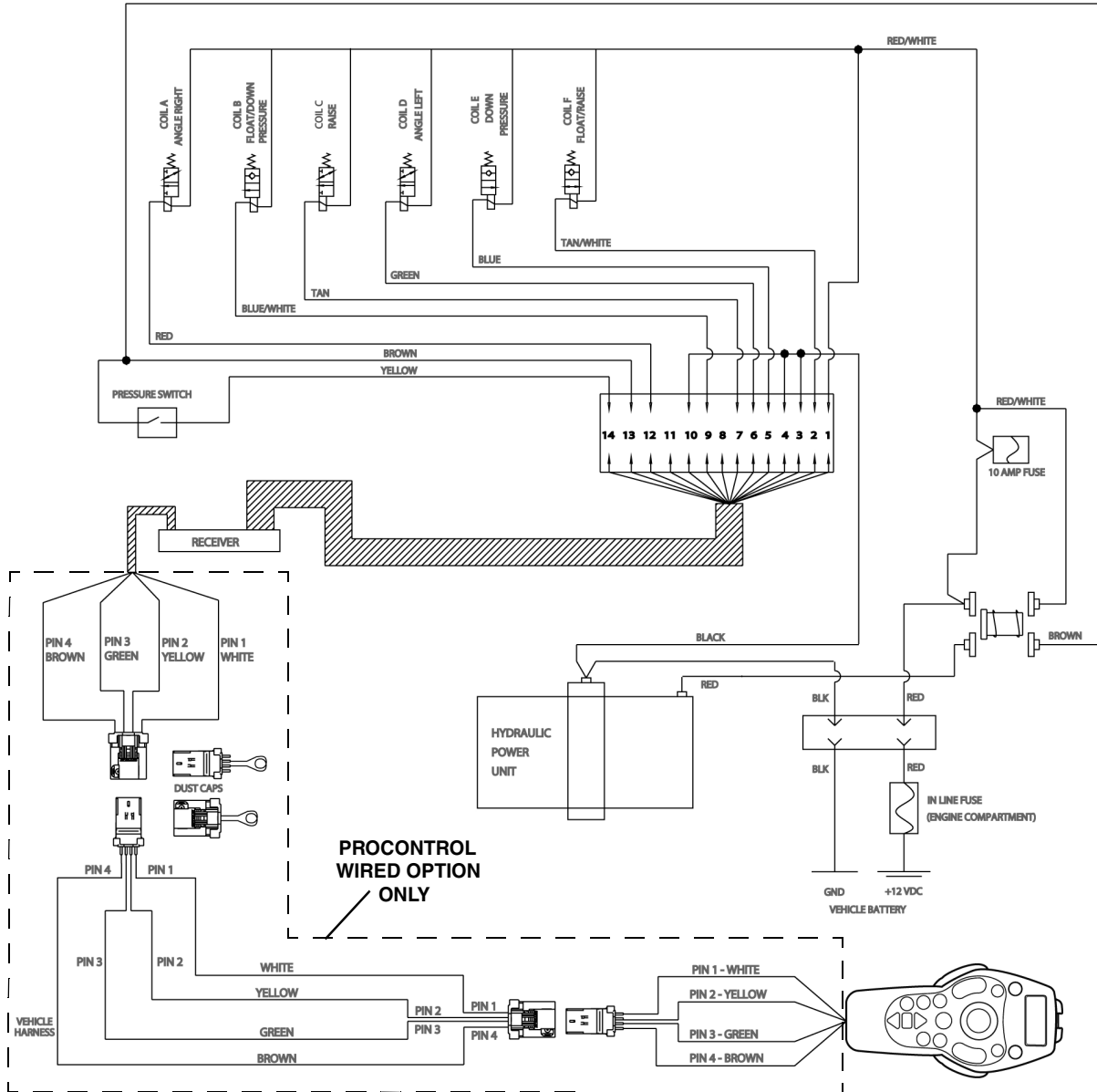


PLOW FUNCTION	MOTOR SOLENOID	A	B	C	D
WIRE COLOR	BROWN	RED	BLUE/WHITE	TAN	GREEN
RAISE	X			X	
DOWN (FLOAT)			X		
DOWN PRESSURE™			X		
ANGLE LEFT	X				X
ANGLE RIGHT	X	X			

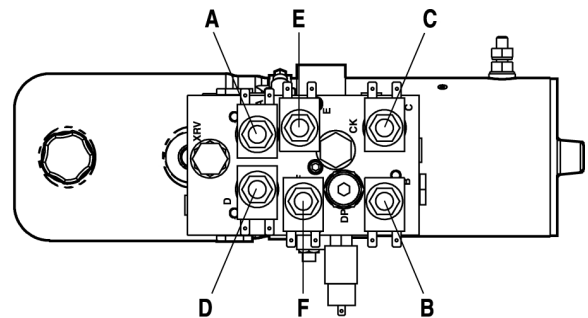




WIRING SCHEMATIC (Down Pressure System) With S.N. After 22D200000



PLOW FUNCTION	MOTOR SOLENOID	A	B	C	D	E	F	PRESSURE SWITCH
WIRE COLOR	BROWN	RED	BLUE/WHITE	TAN	GREEN	BLUE	TAN/WHITE	YELLOW AND BROWN
RAISE	X			X			X	
DOWN (FLOAT)			X				X	
DOWN PRESSURE™			X			X		X
ANGLE LEFT	X				X			
ANGLE RIGHT	X	X						



NOTE: COIL E MUST BE DEACTIVATED FOR ANGLE FUNCTIONS

MAIN WIRING HARNESS SCHEMATIC (Energy Interruption System)

