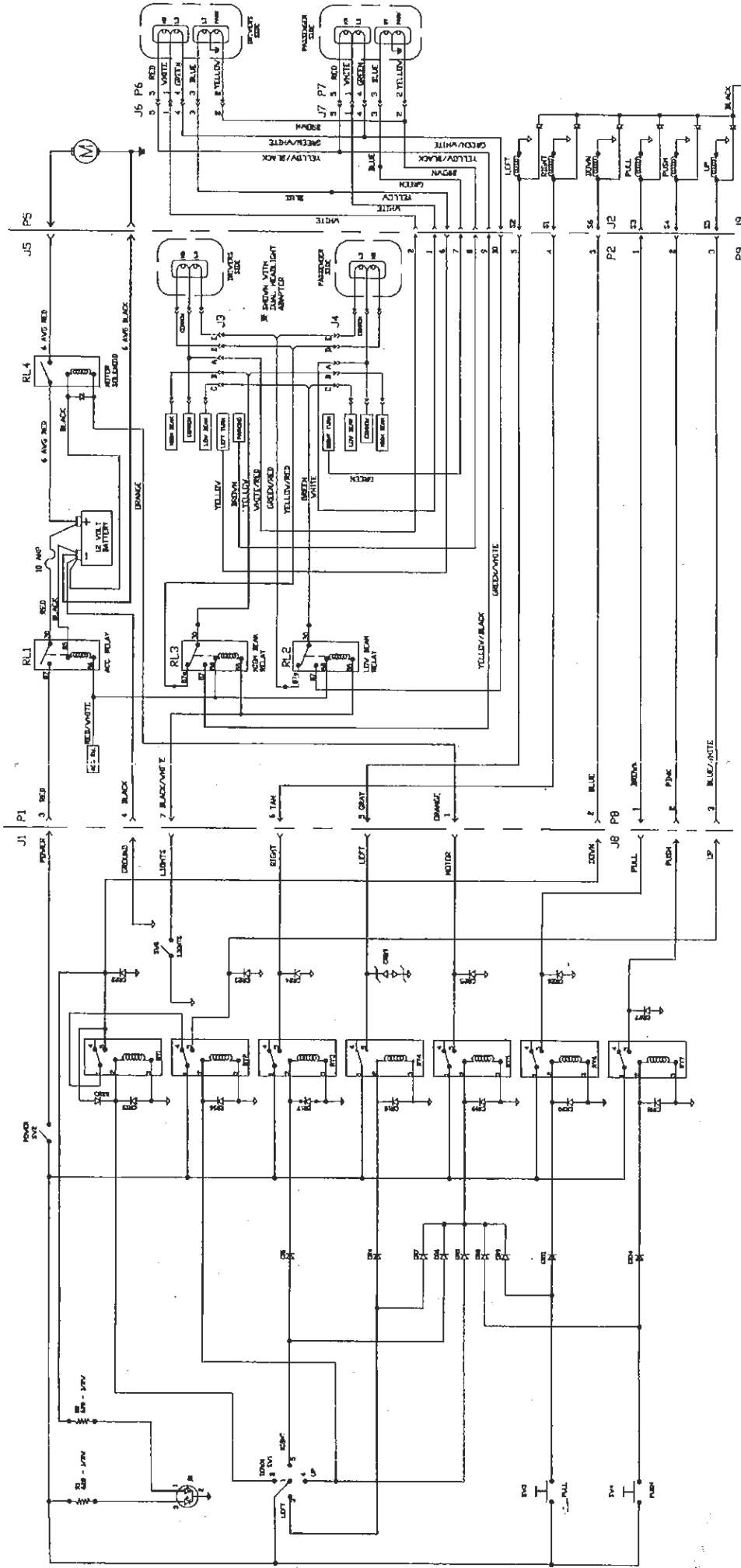


CAB CONTROL

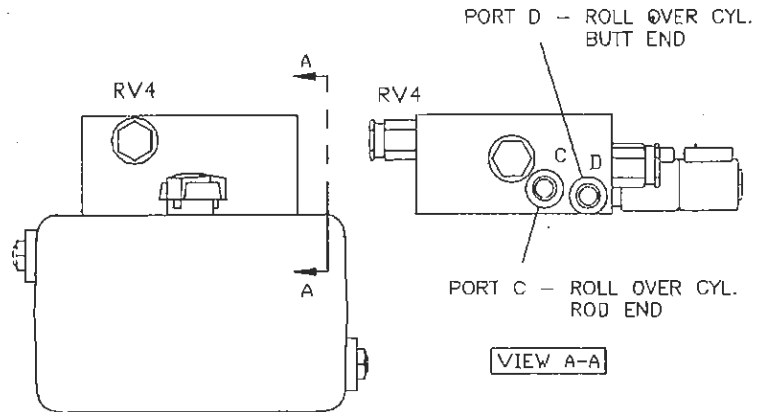
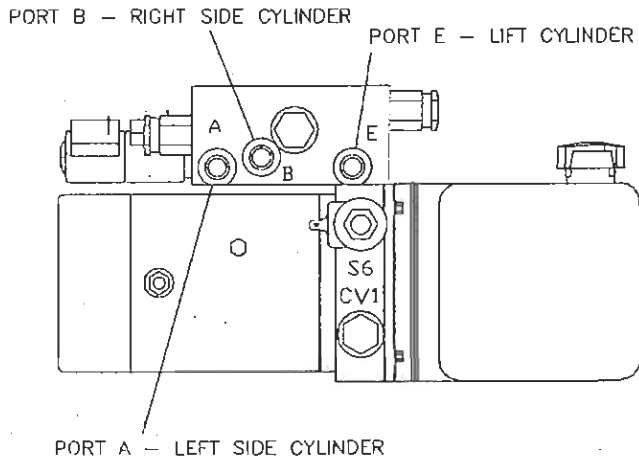
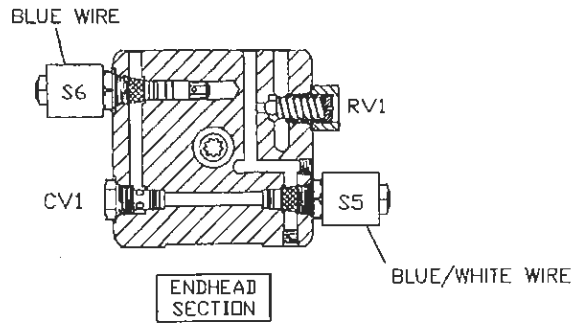
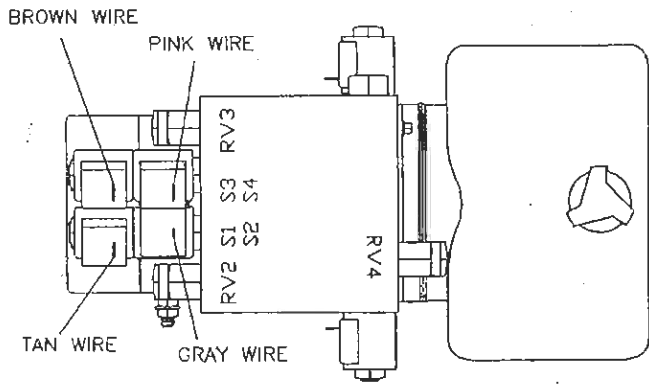
UNDERHOOD HARNESS

EXTERNAL HARNESS



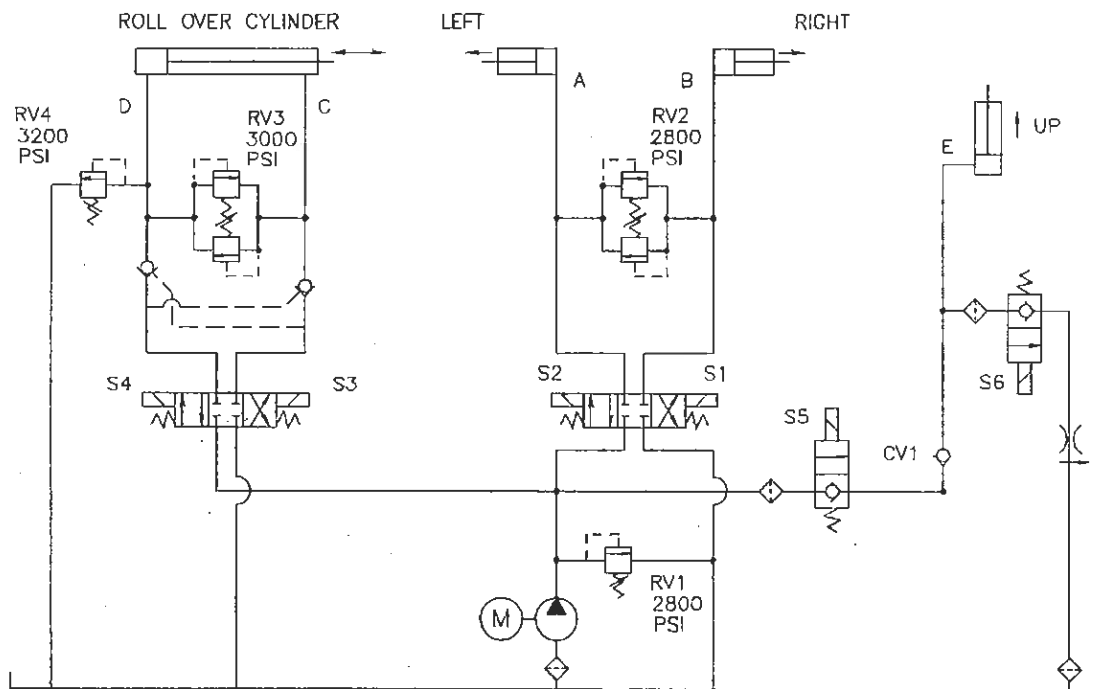
2002 APD
 DATE: 5-15-02
 C-PLD-002

C-PLOW POWER UNIT



- RV1 - RELIEF VALVE, SYSTEM, 2800 PSI
- RV2 - RELIEF VALVE, ANGLE CYLINDERS, 2800 PSI
- RV3 - RELIEF VALVE, ROLL OVER CYLINDER, 3000 PSI
- RV4 - RELIEF VALVE, ROLL OVER CYLINDER, 3200 PSI

POWER UNIT HYDRAULIC CIRCUIT DIAGRAM



- S1 - RIGHT EXTEND, LEFT RETRACT - TAN WIRE
- S2 - LEFT EXTEND, RIGHT RETRACT - GRAY WIRE
- S3 - CURL - BROWN WIRE
- S4 - UNCURL - PINK WIRE
- S5 - LIFT - BLUE/WHITE WIRE
- S6 - LOWER - BLUE WIRE