

# maxilift

ALFA ROMEO

## TECHNICAL SHEET



# H350

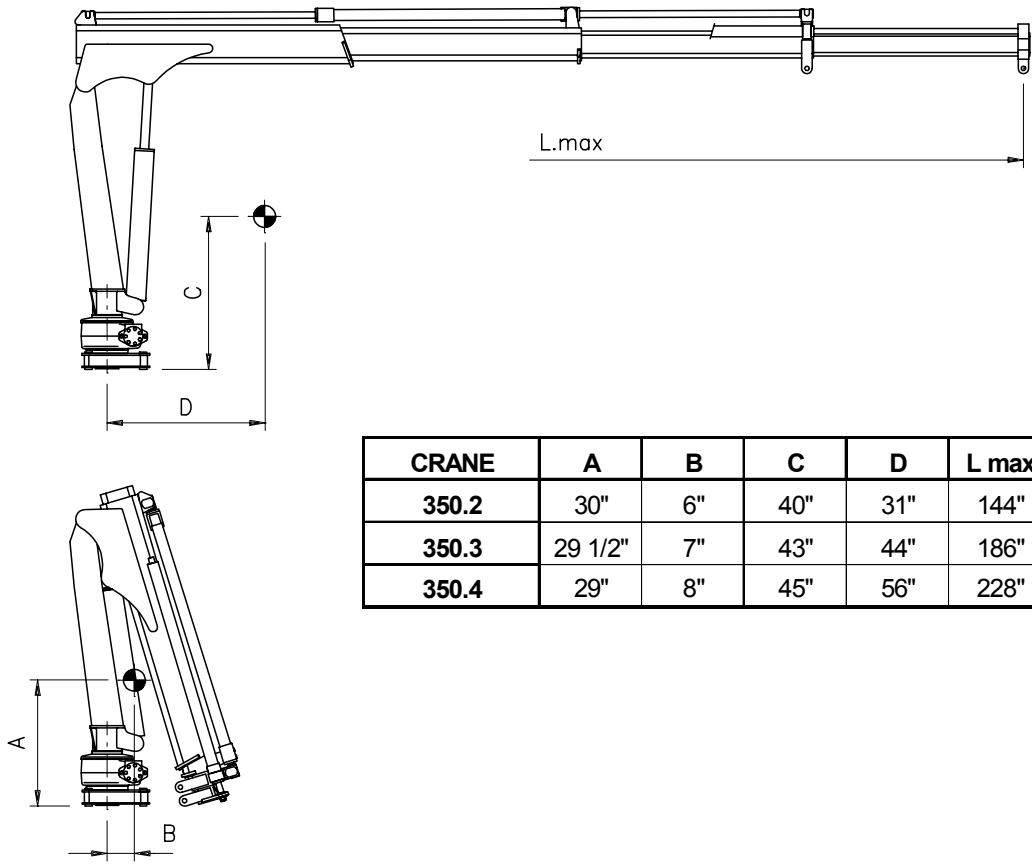
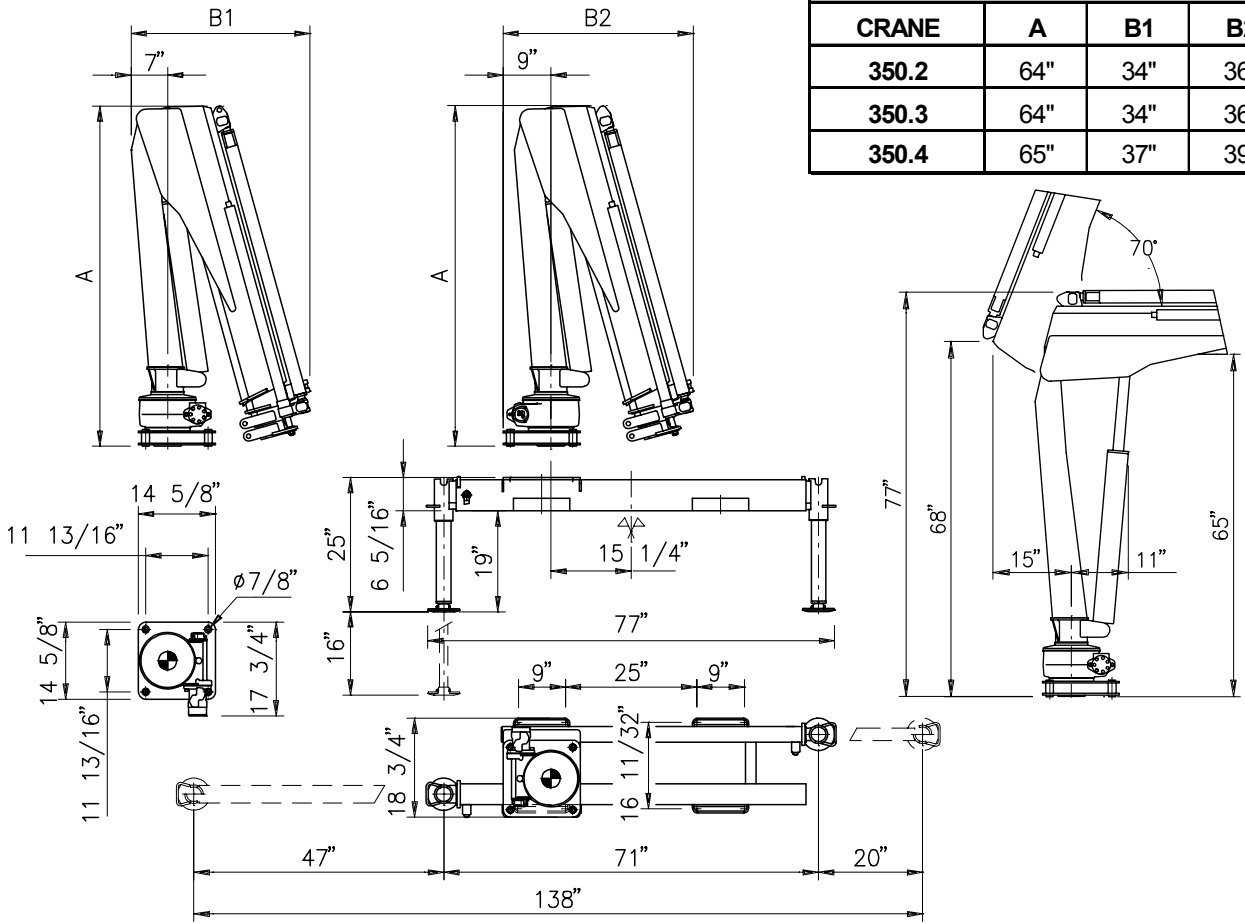


## Next Hydraulics



Cod.: MP.0.122  
Rev.: 0

DIMENSIONS			
CRANE	A	B1	B2
350.2	64"	34"	36"
350.3	64"	34"	36"
350.4	65"	37"	39"



CRANE	A	B	C	D	L max
350.2	30"	6"	40"	31"	144"
350.3	29 1/2"	7"	43"	44"	186"
350.4	29"	8"	45"	56"	228"

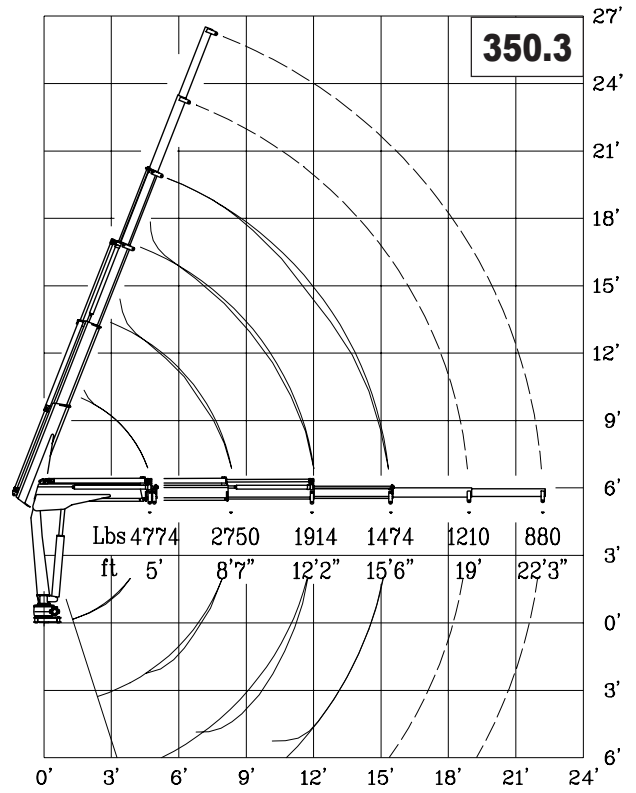
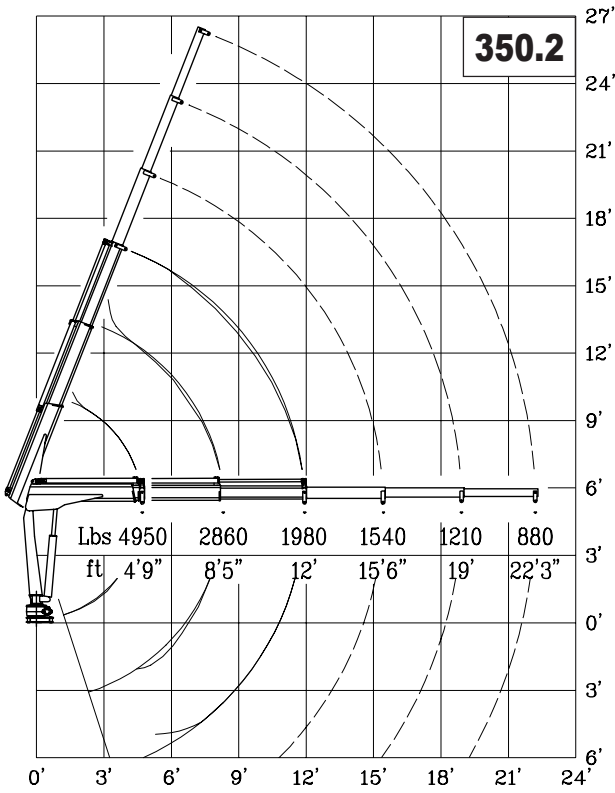
TECHNICAL DATA			VERSION			
TYPE		350	350.2	350.3	350.4	
CRANE RATING	ft. lbs.	24,350				
STANDARD EXTENSIONS Nr (HYDRAULICS - MANUALS)	n°		2H	3H	4H	
STANDARD OUTREACH	ft.		12'	15' 6"	19'	
SLEWING ANGLE	°	360°				
MAXIMUM ANGLE SLOPE	°	4°				
SLEWING TORQUE	ft. lbs.	3,400				
MAX. LIFTING HEIGHT FROM CRANE BASE	ft.		16' 5"	19' 8"	26' 3"	
SUGGESTED OIL FLOW	gpm.	3.1 – 3.9				
MAX. WORKING PRESSURE	psi.	2,750				
BASIC CRANE WEIGHT	VERS. "H"	lbs.	640	700	770	
	VERS. "E"		680	750	815	
BASE WEIGHT WITH EXTENDABLE STABILIZERS	lbs.	285 - 295				
BEAM WEIGHT WITH 2 EXTENDABLE STABILIZERS	lbs.	110				
MOTOR ABSORPTION FOR ELECTROHYDR. CRANE 12V	A min/max		80/250	80/250	80/250	
MOTOR ABSORPTION FOR ELECTROHYDR. CRANE 24V	A min/max		50/120	50/120	50/120	

WINCH SPECIFICATIONS	U.M.	
MAX. WINCH SINGLE LINE CAPACITY (3 <sup>rd</sup> LAYER)	lbs.	2,200

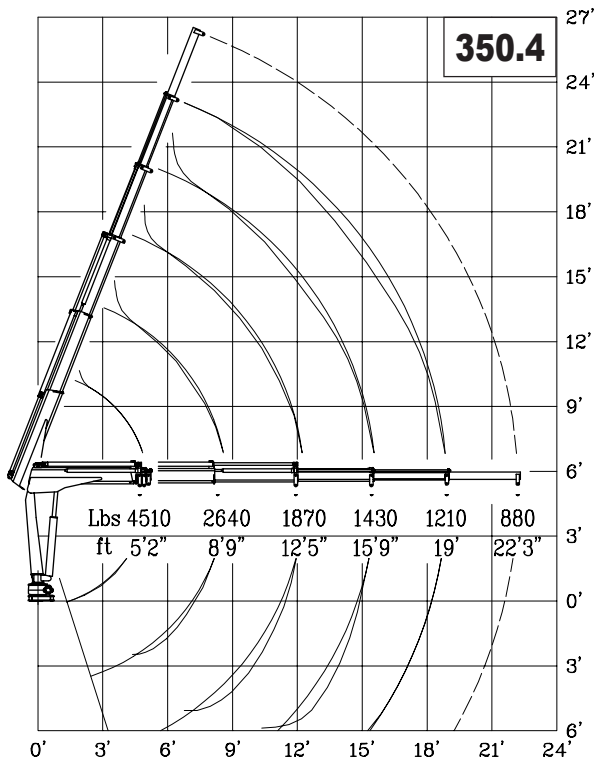
VERSION	DESCRIPTION
"E" 12V	ELECTROHYDRAULIC
"E" 24V	ELECTROHYDRAULIC
"H"	HYDRAULIC (PTO)

OPERATING TIMES										
VERSION	SLEWING (rpm)	LIFTING (sec)		LOWERING (sec)	EXTENSION OUT (sec)			EXTENSION IN (sec)		
		Pmin	Pmax		350.2	350.3	350.4	350.2	350.3	350.4
<b>350 "E" 12/24V</b>	1.8	25	38	18	27	37	47	18	28	38
<b>350 "H" (P.T.O)</b>	1.8	16		18	27	37	47	18	28	38

Pmax: max. working pressure  
Pmin: min. working pressure



Lifting class **H2-B3**  
DIN 15018



# maxilift

by

**Next Hydraulics**



Via Mediterraneo n°6, 42022 Boretto (R.E.) Italy  
 Tel.: 0522-963008, Fax: 0522-963039  
<http://www.maxiliftcrane.com> E-mail:  
[nexthdraulics@tin.it](mailto:nexthdraulics@tin.it)